

PURDUE UNIVERSITY

P PURDUE
UNIVERSITY®



David and Bonnie Brunner College of Veterinary Medicine	\$10M
Anonymous College of Health and Human Sciences	\$6M
Jon Taenzer (d. 2019) College of Science	\$3.9M
Joanne Troutner Diversity & Inclusion, Libraries, PRF, Agriculture, Liberal Arts, Veterinary Medicine, Convocations, Athletics	\$3.6M
William Phillips (d. 2019) College of Science	\$2.8M
Suzanne Robertson School of Electrical and Computer Engineering	\$2M

David Burow and Suzanne Sweeney School of Electrical and Computer Engineering	\$1.5M
Valerie McKinney School of Management	\$1.35M
Alexander and Helena Galezewski Purdue University and Purdue Research Foundation	Undisclosed
Michael and Carol Sohn Purdue Bands & Orchestras and College of Engineering	Undisclosed

Board of Trustees Meeting Topics



FEB: Strategic Initiative Update



APRIL: Affordability



JUNE: Fundraising



AUG: End of Year Report



OCT: Enrollment & Graduation



DEC: Institutional Reputation

- 1. Value and Affordability**
- 2. STEM Leadership**
- 3. Magnet for Talent / Economic Engine**

8 New Majors

- Data Science
- Industrial Management Data Analytics
- Design and Construction Integration
- Computer Engineering Technology
- Energy Engineering Technology
- Construction Management Technology
- Plant Studies Exploratory
- Aquatic Sciences* (*Not on ICE list*)

10 New Minors

- Aquatic Sciences
- Data Driven Agriculture
- Bioinformatics
- Fermentation Sciences
- Global Food & Agriculture Systems
- Insect Biology
- Occupational Health Sciences
- Mathematical Economics
- Smart Manufacturing Enterprise
- Advance Global Technology

5 New Certificates

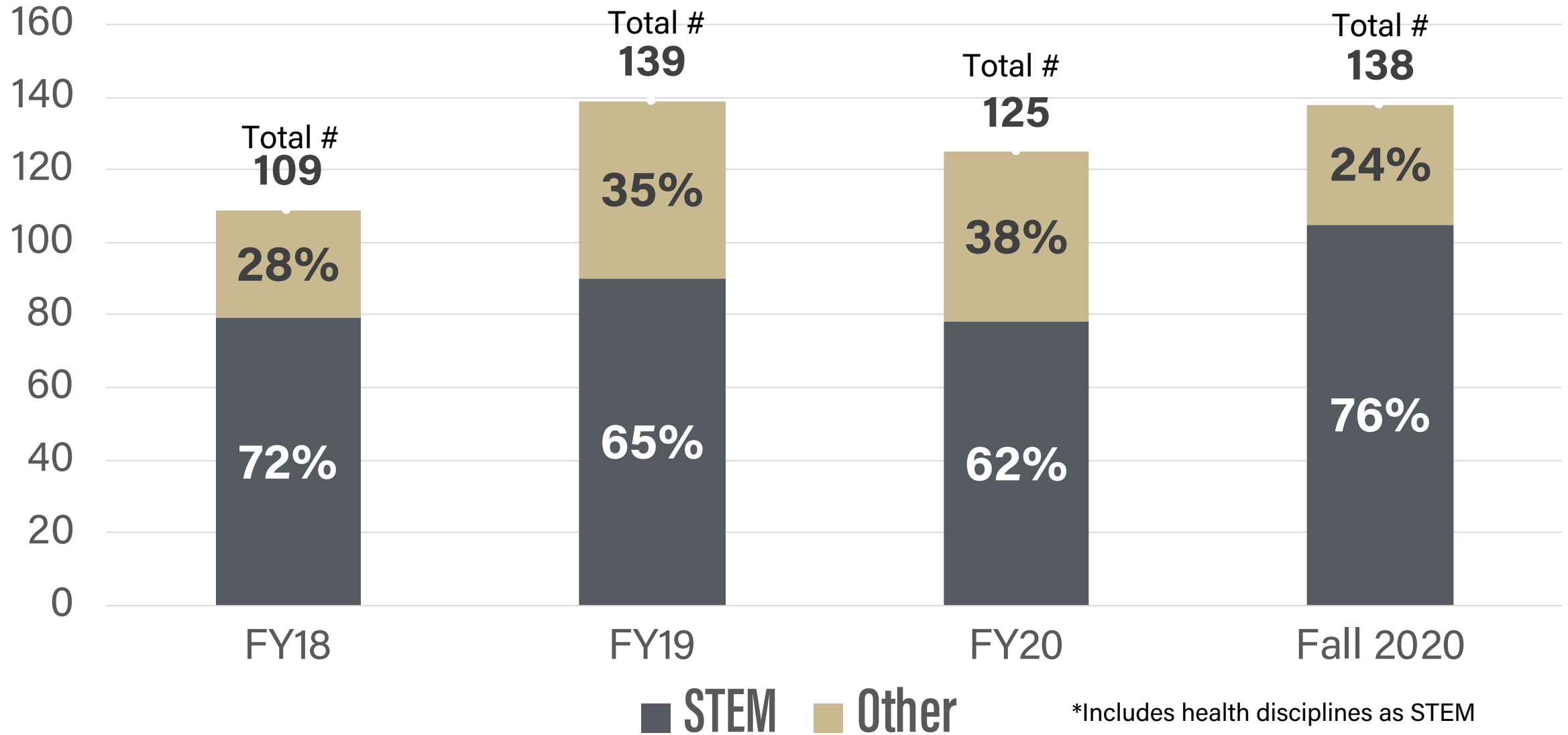
- K-12 Integrated STEM Education Certificate
- Science, Technology, and Society (STS)
- Music Technology
- Teaching Secondary Education Computational Thinking
- Applied Data Science

19 New Concentrations Including...

- Insect Biology Forensic Entomology
- Marine and Freshwater Biology
- Fisheries
- Bioarcheology
- Sustainable Biomaterials

New Faculty Hires Mostly in STEM

352 STEM Faculty Hired since 2018; 68% of all new hires



NEW STEM FACILITIES AND LABS



College of Veterinary Medicine Teaching Hospital



Chaney-Hale Hall of Science



Dudley Hall & Lambertus Hall
(Engineering and Polytechnic Gateway)

NEW STEM FACILITIES AND LABS



FLEX Lab



Agricultural and Biological Engineering



Creighton Hall of Animal Sciences



Discovery & Learning Research

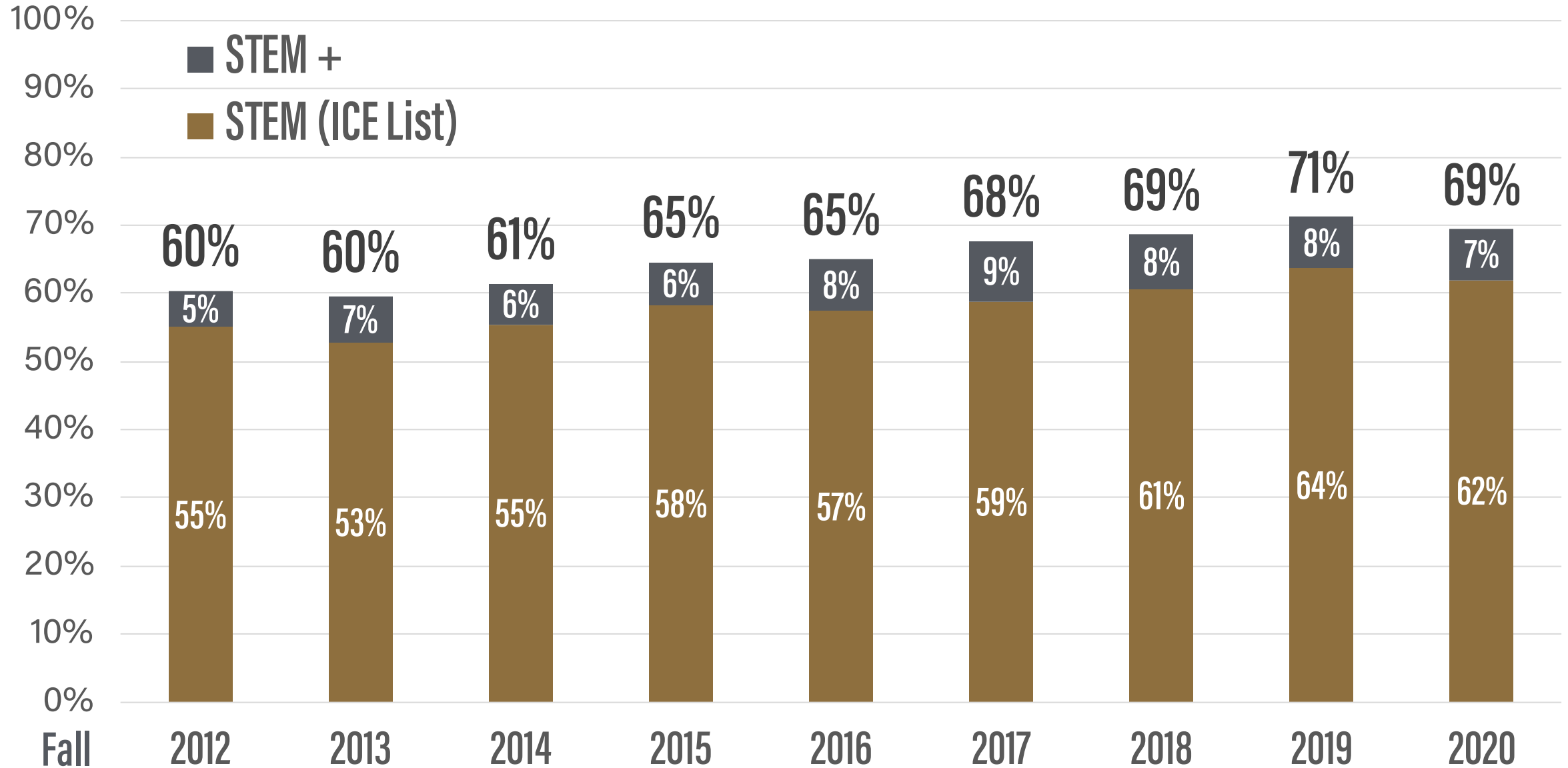


Bechtel Innovation Design Center

Not Included in Federal STEM Definition

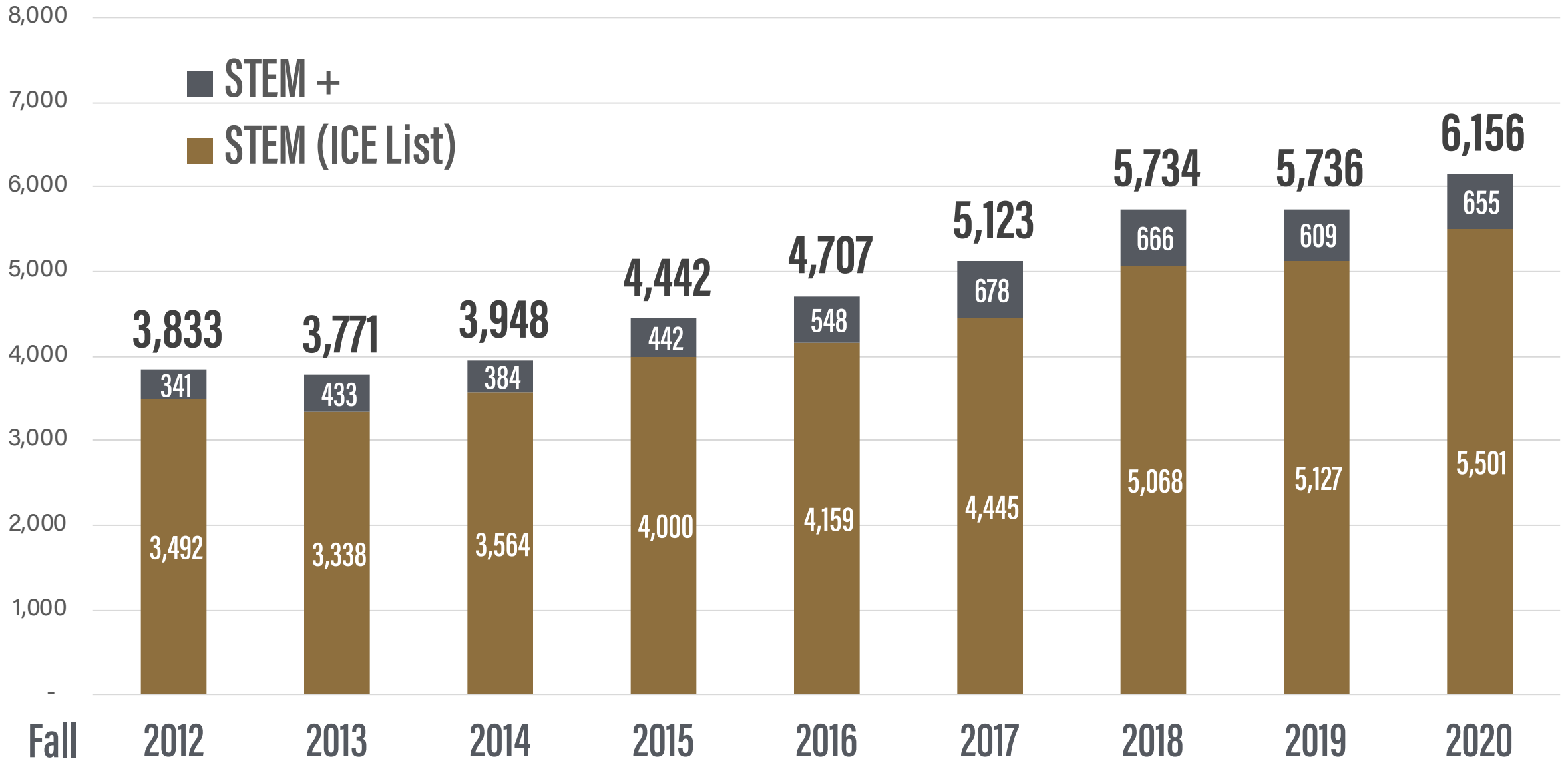
College	Major
College of Agriculture	Aquatic Sciences / Fisheries
	Forestry
	Pre-Veterinary Medicine
	Turf Management & Science
	Wildlife
College of Health and Human Sciences	Accelerated Nursing
	Applied Exercise & Health
	Coordinated Dietetics
	Environmental Health Science
	Health Science Pre-Professional
	Kinesiology
	Nursing
	Radiological Health Sciences
	Speech, Language & Hearing Sci
	Nutrition & Dietetics
	Nutrition, Fitness & Health
	Occupational Health Science

More Freshmen Enrolled in STEM Majors Annually by Percent



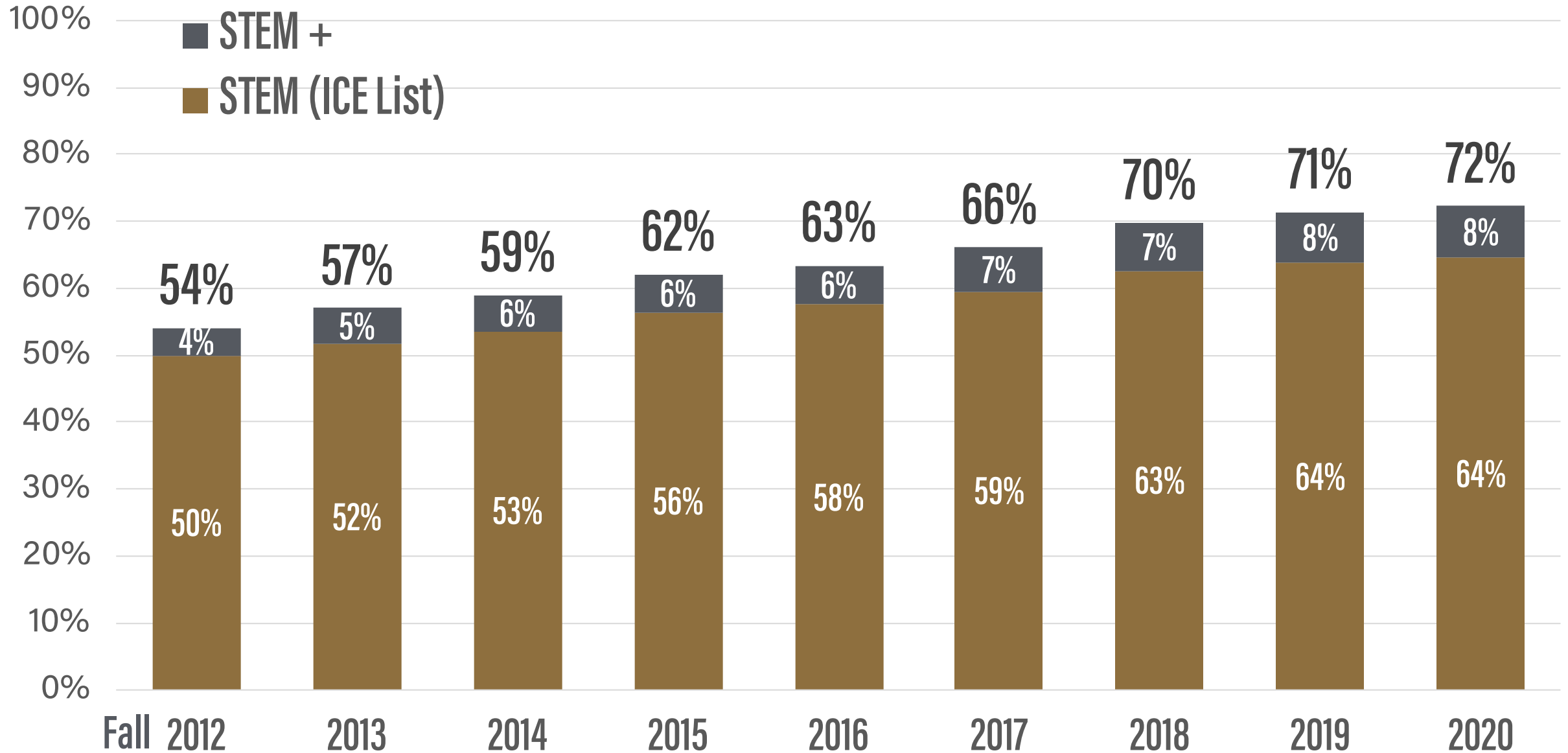
"Freshmen" refers to "New Beginners"

More Freshmen Enrolled in STEM Majors Annually

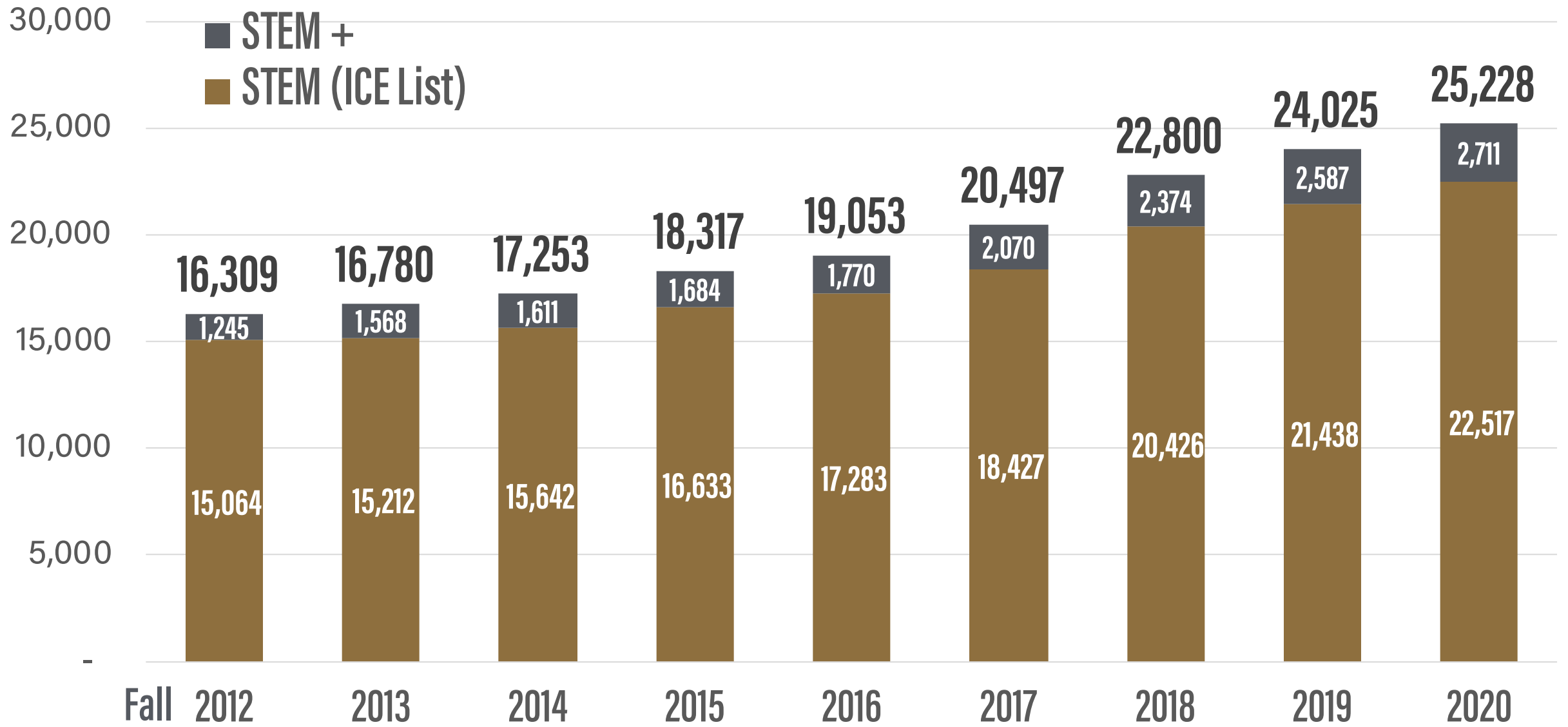


"Freshmen" refers to "New Beginners"

More Undergraduates Enrolled in STEM Majors Annually by %

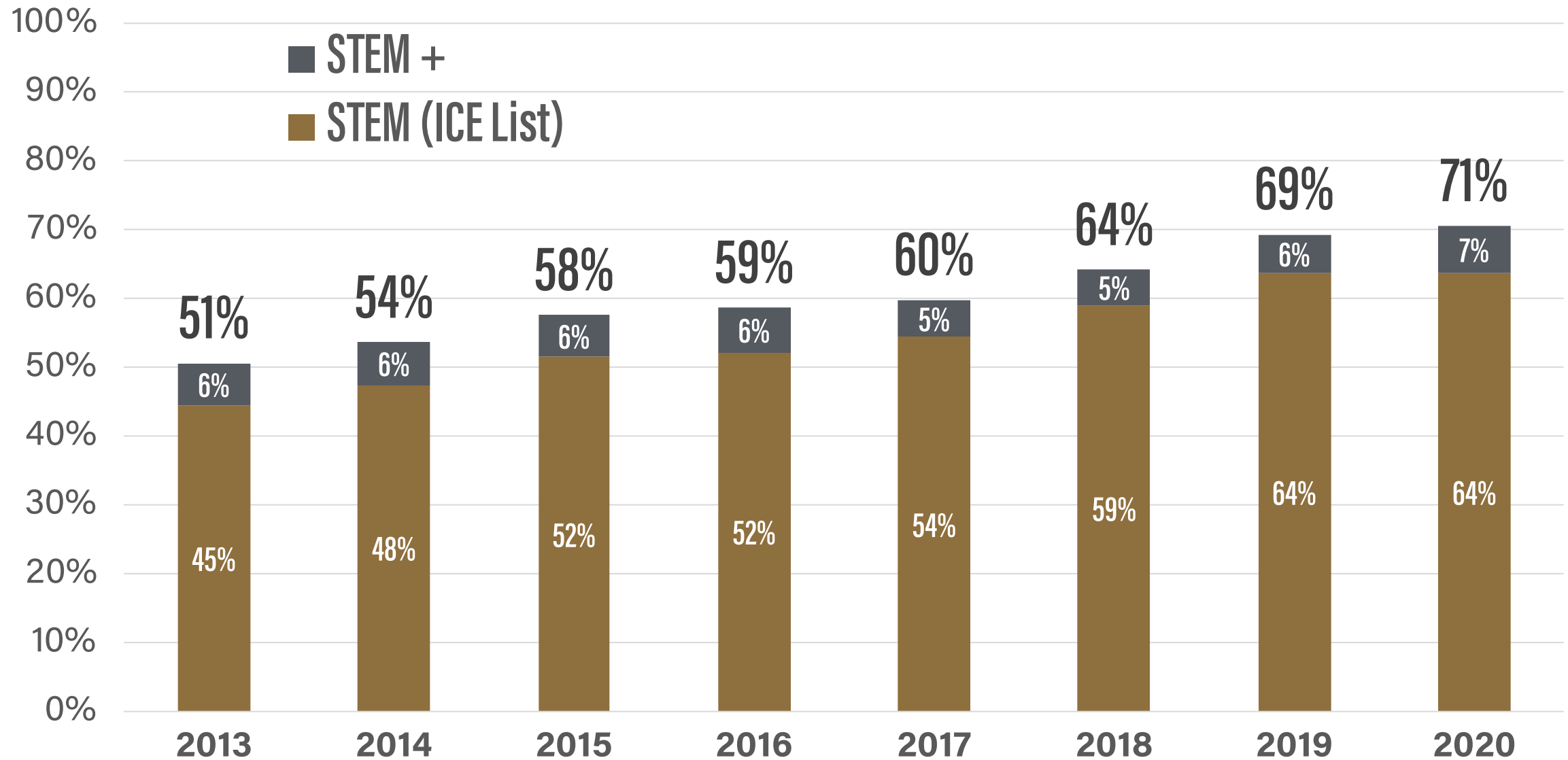


More Undergraduates Enrolled in STEM Majors Annually



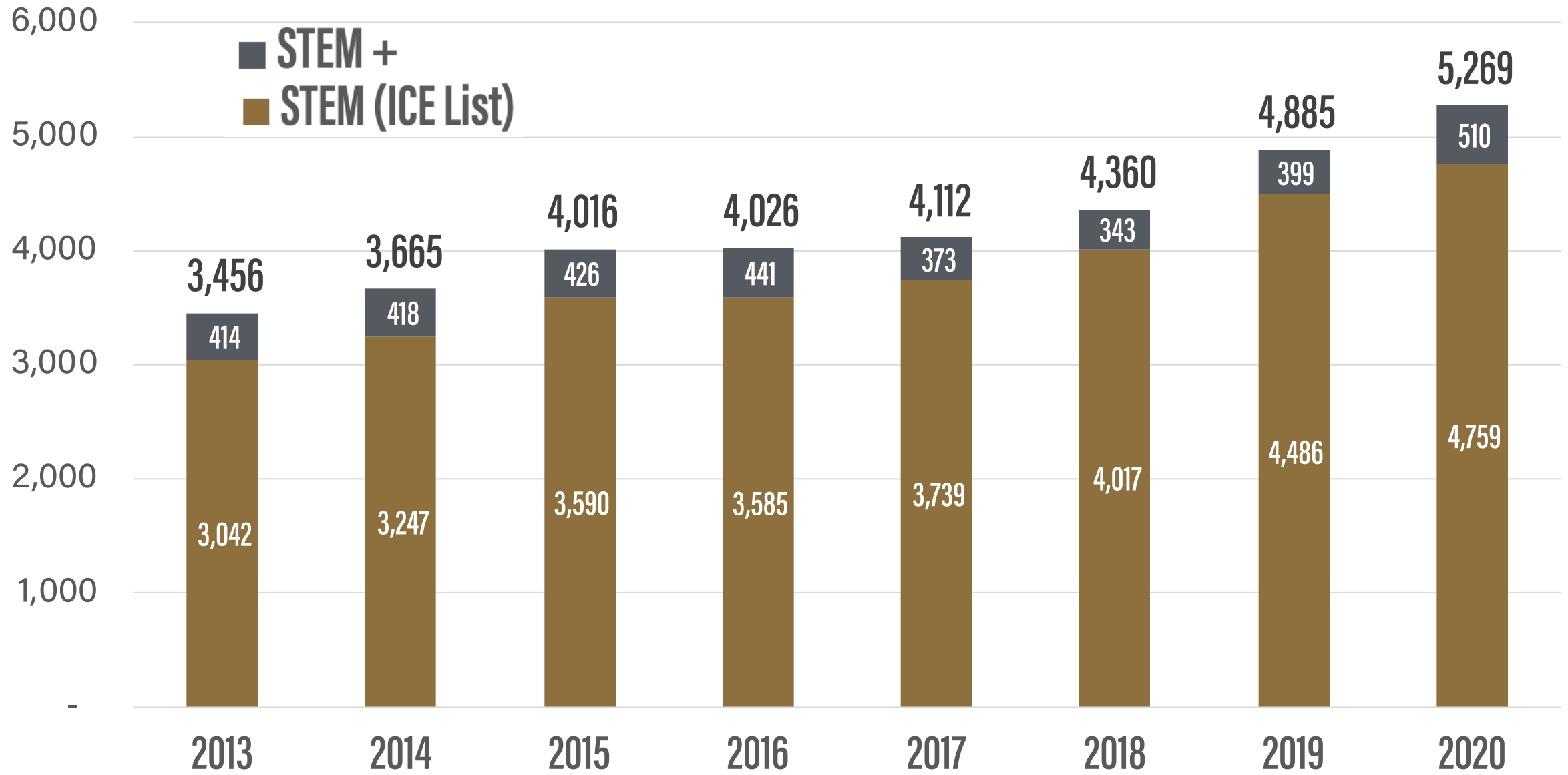
Bachelor's degrees only.

More STEM Degrees Awarded as a Percent of All Degrees



Bachelor's degrees only.

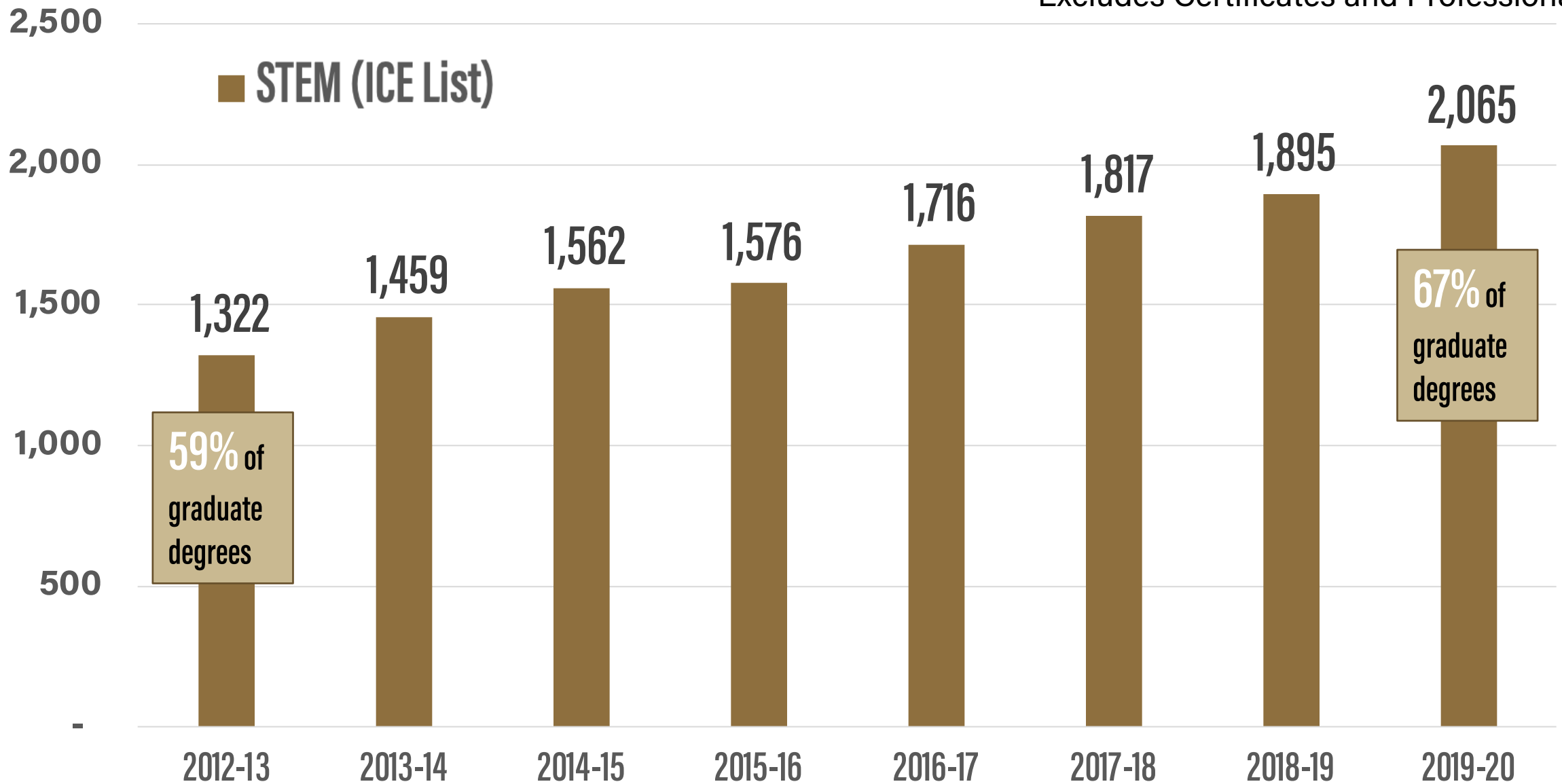
More STEM Degrees Awarded Annually



Bachelor's degrees only.

STEM Graduate Degrees

*Excludes Certificates and Professional.



% of Undergraduate Degrees Awarded in STEM vs Peers



2012-13			2018-19		
Rank	School	% STEM	Rank	School	% STEM
1.	Georgia Tech	77%	1.	Georgia Tech	85%
2.	UC Davis	53%	2.	UC San Diego	68%
3.	UC San Diego	52%	3.	UC Davis	67%
4.	North Carolina State	49%	4.	Purdue	64%
5.	Michigan	46%	5.	UC Berkeley	57%
6.	Purdue	45%	6.	UC Santa Barbara	56%
7.	Virginia Tech	42%	7.	Illinois	54%
8.	Iowa State	40%	8.	North Carolina State	54%
9.	UC Berkeley	39%	9.	Virginia Tech	52%
10.	Illinois	39%	10.	Michigan	52%

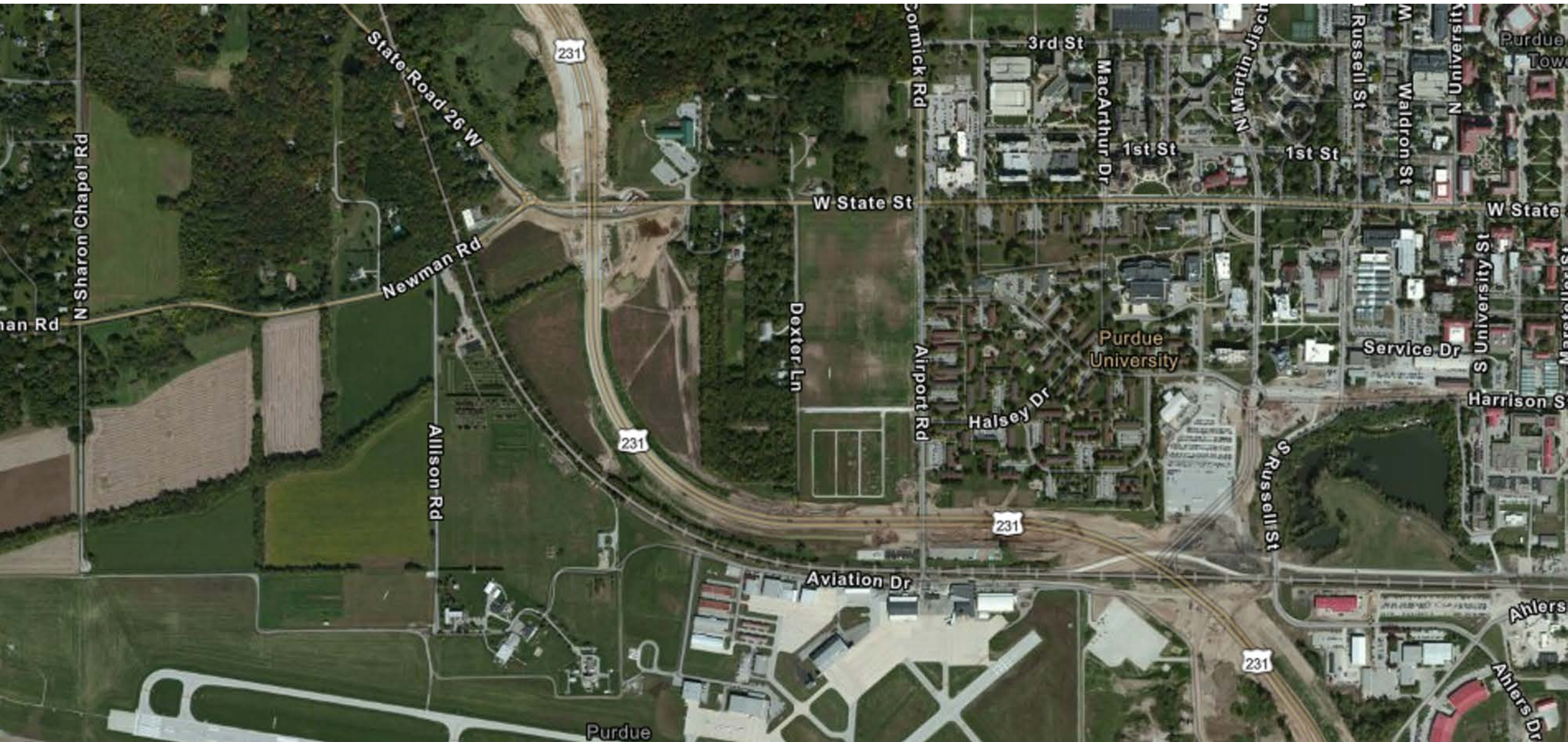
**Among Schools with at least 2,000 students.
Source: IPEDS, which includes statewide technology sites.
ICE list only.*

1. Value and Affordability

2. STEM Leadership

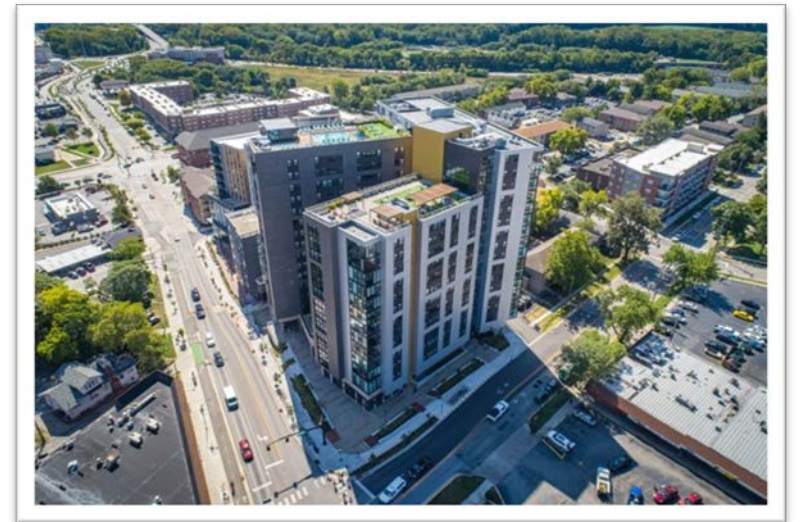
3. Magnet for Talent / Economic Engine

Campus in 2014

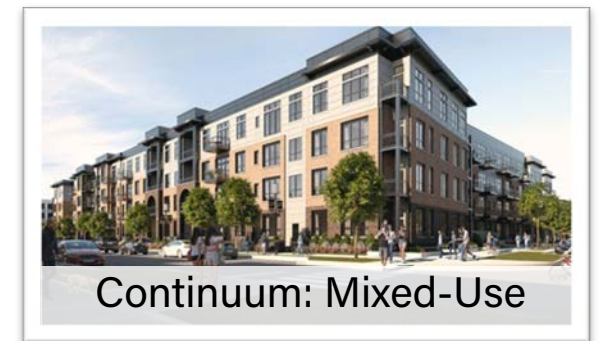


State Street Renovations 2016-18

- \$120 million State Street Redevelopment Project
- New and improved sidewalks
- 8,300 lane feet of cycle track
- 12,200 lane feet of shared use paths
- 33,700 linear feet of landscaping to buffer pedestrian and vehicular traffic



- \$1 billion, 30-year initiative
- "Live. Work. Learn. Play" vision
- Aerospace District: business hub for collaboration on research & commerce



	Construction	Investment	Investor Type
Work	Purdue Technology Center Aerospace (aka Rolls Royce)	\$6.4 Million	PRF with private leasing
	Convergence Innovation and Collaboration Office Building	\$32 Million	PRF with private leasing
	SAAB Research and Production Facility	\$9 Million	Private
Live	Schweitzer Engineering Labs	\$24 Million	Private
	Continuum (non-student) Apartments	\$46.6 Million	Private
	Aspire student housing	\$85 Million	Private
	Provenance Residential Village	\$136 Million*	Private
Total		\$339 Million	

**At full build out*

Community Growth and Economic Development

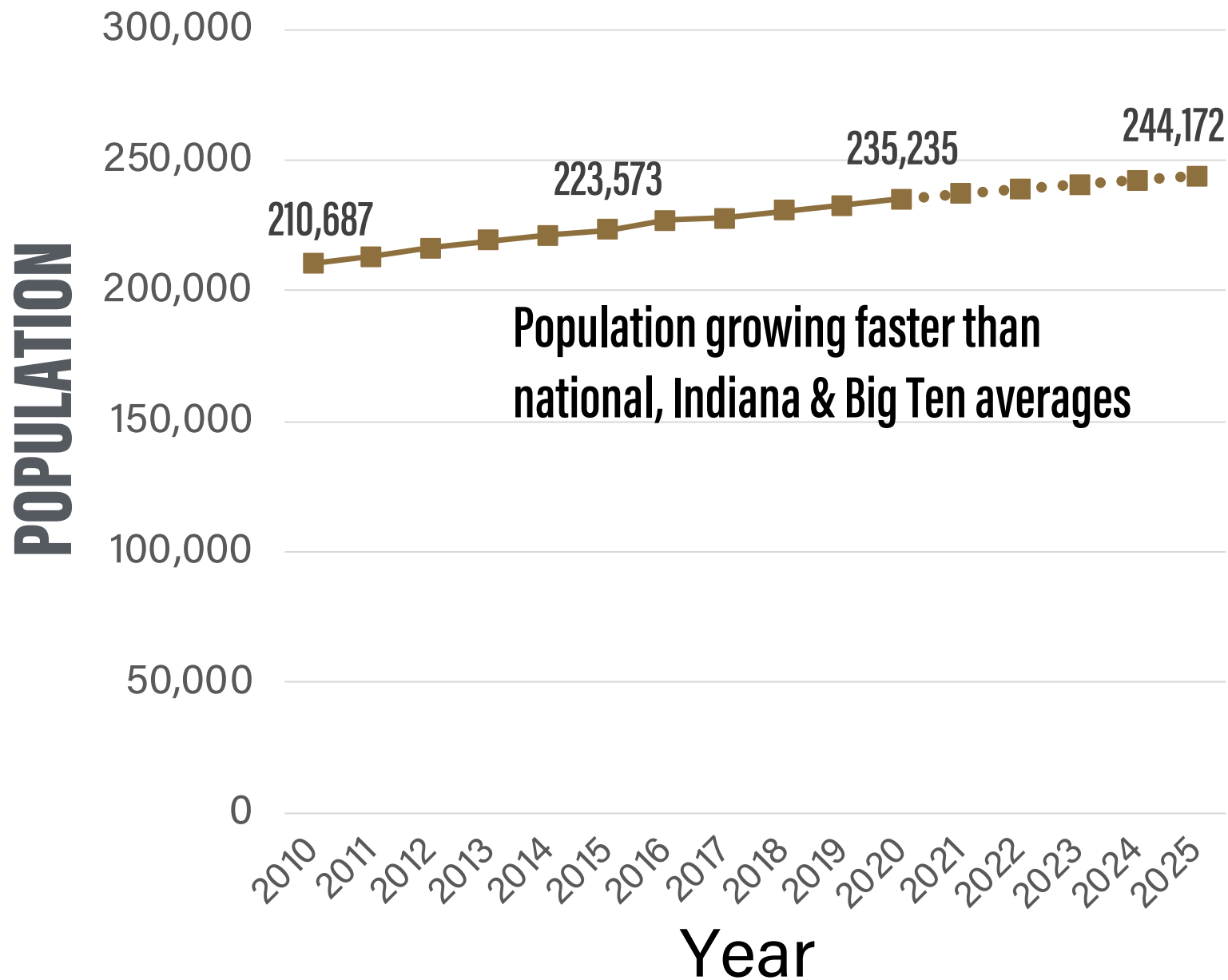


WL Purdue Research Park Expansion: 2017

- \$12 million, 60,000-square-foot expansion to Kurz Purdue Technology Center
- Largest cluster of technology companies in the state
- 725-acres
- 50 buildings
- 3,200+ employees
- 327,000 sq ft feet of business incubation space
- Average wage for startup companies in excess of \$63K



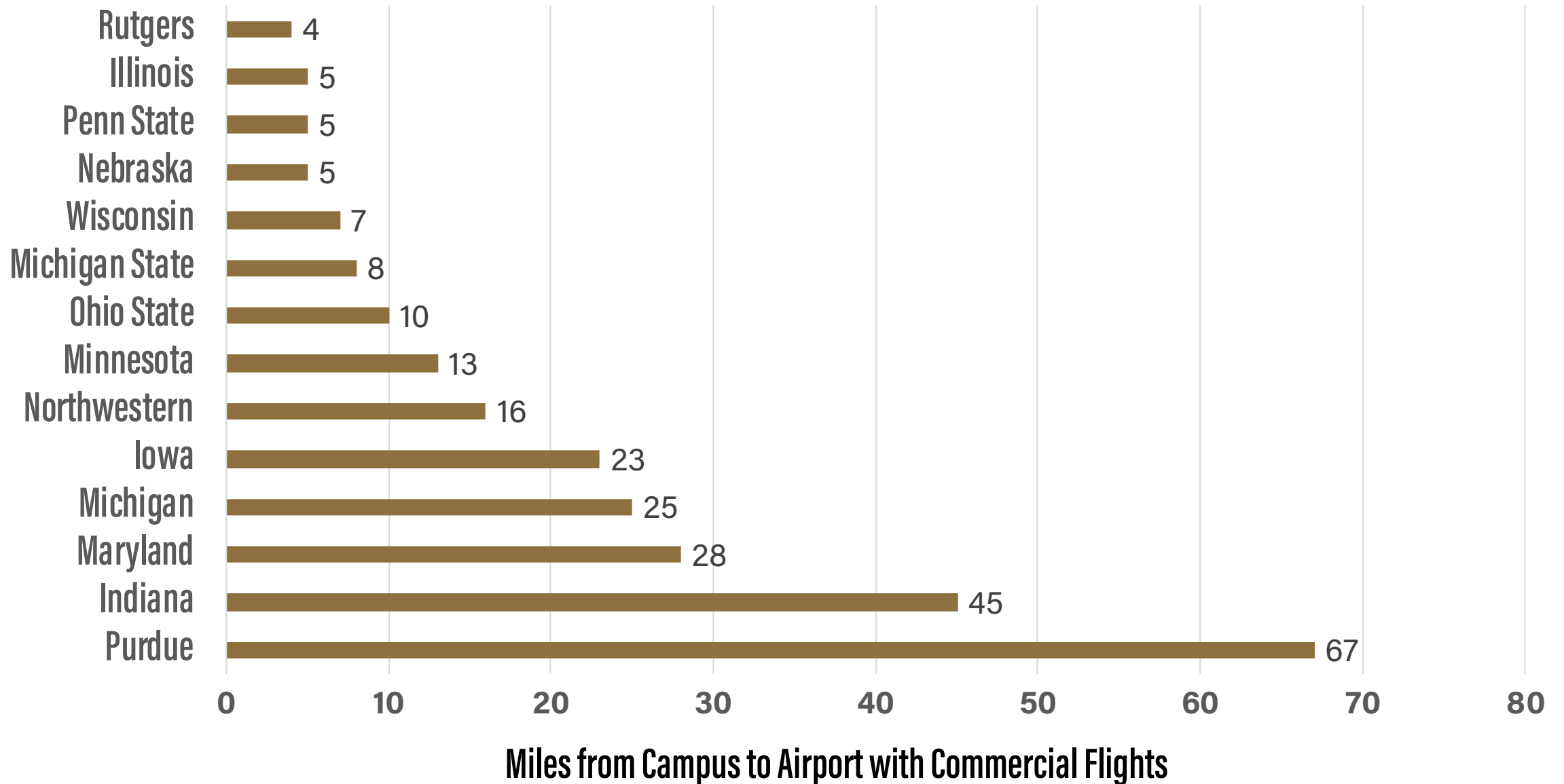
Steady Population & Wage Growth: Greater Lafayette



Real Per Capita Personal Income Growth

- Up 18% in last decade

Big Ten Universities Ranked by Distance to Commercial Airport



Competitive federal grant to assist smaller communities in expanding air service

- Purpose of grant is to encourage community support for air service development
- Would allow more funding and expenditures in pursuit of goal to connect to hubs

Carriers have expressed interest in market but success more likely with this grant and proven community support.



PURDUE UNIVERSITY

P PURDUE
UNIVERSITY®

